

OpusFSI

Flight Simulator Interface for Prepar3D

Overview



January 20, 2025

Opus Software Limited

Email: opusfsi@opussoftware.co.uk Website: www.opussoftware.co.uk/opusfsi.htm



OpusFSI The ultimate Flight Simulator Interface for Prepar3D includes, **Live Weather Engine** for real world live weather updates, **Live Camera** for view control and dynamic head movements, and **Live View** for synchronized multi-screen networked displays.

OpusFSI helps take reality to the next level by combining three excellent programs into one user friendly interface, setting new standards of performance and realism throughout its novel design. The **OpusFSI** interface is ideally suited to both standalone and networked Prepar3D systems making it the ideal addon for cockpit builders and general users alike. In addition **OpusFSI** includes **Opus World Weather Themes**, **Weather Locator** and **Weather Relocation**. Device drivers are included for ButtKicker control, GPS output, and the CPFlight MCP737/EFIS737 PRO/EL panels with full interface for the PMDG 737NGX aircraft simulator.

*The **OpusFSI** interface is ideally suited for both **standalone** (single PC) and **networked** (multi-PC/laptop) systems.*

- * Combines three or more programs into one user friendly interface.
- * Sets new standards of performance and realism.
- * Ideal addon for cockpit builders and general users alike.
- * Ideal addon for both standalone and networked simulator systems.
- * **Live Weather** engine for live detailed weather as far as the eye can see, instant weather updates and perfect weather synchronization across all systems.
- * Opus pioneered the use of Dynamic Weather Themes making it possible to give you detailed real world weather horizon to horizon for the very first time.
- * **Accurate Weather throughout your flight.**
- * **Accurate Destination Weather when over 200km away**, with perfect weather reports at any distance to any point en-route.
- * **Live Weather Assistant** displays dynamic geographic weather maps including winds, cloud cover, visibility, temperature, precipitation levels, Met station coverage and local traffic.
- * **Flight Planning Assistant** provides dynamic in-flight weather reports and more.
- * **Client Side Weather Control** enables you to edit flight parameters and display weather data on a networked client PC.
- * **Site Effects** for additional turbulence and wind shear effects within 80 km of the airfield resulting from local features such as terrain or obstacles on approaches.
- * **Live Weather Overview and Locator** provides overview maps of weather conditions and a search facility so that you can locate weather matching your criteria.
- * Save your own named **World Weather Themes** from the current weather to reload any time.
- * **Relocate Weather** from any place in the world to your current location.
- * Load historic weather from within the last 9 days (24 hours for WWTs and the Weather Locator).
- * User friendly **Live Camera** control, configuration and docking interface for Virtual Cockpit, 2D Cockpit, External Aircraft, Runway, Spot, Locked Spot, FlyBy, Top-Down, Nearest Tower, Observer and World Views.
- * Additional support for windowed views for systems equipped with multi- screened computer systems.
- * **Dynamic head movements** or virtual cockpit camera shake based on actual real-life captured 3D accelerometer data.
- * **Dynamic aircraft movements** or 2D cockpit camera shake based on actual real-life captured 3D accelerometer data.
- * **Automated head movement** to assist taxiing and banking in a turn.
- * Import, create or export **Camera Panning Sequences** which can be assigned to a shortcut button/key or camera views.
- * **Live Camera Control** enables you to adjust to the eye point for any VC, 2D, or Custom

view using either a GamePad, the arrow keys within the LCC dialog, or any assigned button/key.

- * Synchronized **Live View** networked views, aircraft status, weather and cloud formations.
- * Ultra high performance IPC communications between networked systems.
- * **TrackIR®** real-time 3D view control full compatibility.
- * **GPS output** for navigation packages such as SkyDemon® and ForeFlight®.
- * **ButtKicker®** Gamer 2 interface for added vibrational feedback.

Product Overview

On standalone systems **OpusFSI** incorporates two superb functions through its **Live Weather Engine** and **Live Camera** options.

The **Live Weather Engine** makes use of our unique **Dynamic Weather** update to provide the most advanced weather updating software in the marketplace. The **Live Weather Engine** has set new standards for weather updating for Prepar3D flight simulators. OpusFSI provides the most detailed, realistic and efficient weather updating service. The **Live Weather Engine** is responsible for supervising both the turbulence and ultra-realistic **Dynamic Head Movement** utilising actual real-life captured **3D accelerometer data**. **Automatic Head Movements** assist the pilot whilst taxiing and banking in a turn. The Live Weather Engine allows you to create and name your own **Opus World Weather Themes** based on the current dynamic theme created from the live METAR reports. In addition you can import your own custom METARs and also load historic weather for the previous 9 days (24 hours for WWTs and the Weather Locator). **Live Weather Overview and Locator** provides overview maps of weather conditions and a search facility so that you can locate weather matching your criteria. You may also **Relocate Weather** from any place in the world to your current location. **Flight Planning Assistant** provides dynamic in-flight weather reports and more.

Live Camera provides excellent camera creation, control and docking facilities through its user friendly interface, totally eliminating the need to alter any of the simulator's controls. You can create many useful views that are not included as standard in your sim and also control the transition speed between these different views. This can be coupled with **Live Camera Control** and a dedicated 6-axis GamePad controller to move around the cockpit or exterior to your heart's content. Import, create or export **Camera Panning Sequences** which can be assigned to a shortcut button/key or camera views. The **Live Camera** interface also includes support for **Windowed Views** which are ideally suited to computer systems equipped with either multiple screens or single large screens.

In addition,

On networked systems irrespective of the size and complexity of your system, whether your system consists of a main 'flying' PC with a single networked laptop client, or a more elaborate multi-computer networked system; the **Live View** interface, with its **ultra high-performance IPC communications**, unique **Client Side Smoothing** software, and perfect synchronization of aircraft status, weather and cloud formations, will provide you with the highest possible networking performance. Whether you simply want an additional display to control flight parameters and monitor flight and weather reports, or provide further scenic or external view options, or wish to

create a multi-screened panorama for your Prepar3D experience, **Live View** offers you the ideal hassle free user-friendly solution.

Your main 'flying' **OpusFSI** server is the machine through which you control the aircraft. The networked client **OpusFSI** systems are synchronised to the server through multiple ultra high-performance IPC links, the client systems are used primarily as view controllers. The networked systems allow you to create a multi-screened simulator system without placing the full workload and burden on your main system.

From this set up it therefore follows that all in-cockpit or instrument panel views used to control the aircraft must be displayed on the main server. All other views (scenic or external) can be offloaded onto the client systems. You can create wide panoramic vistas this way, or additional external aircraft views, without draining the resources on your main system or degrading its performance.

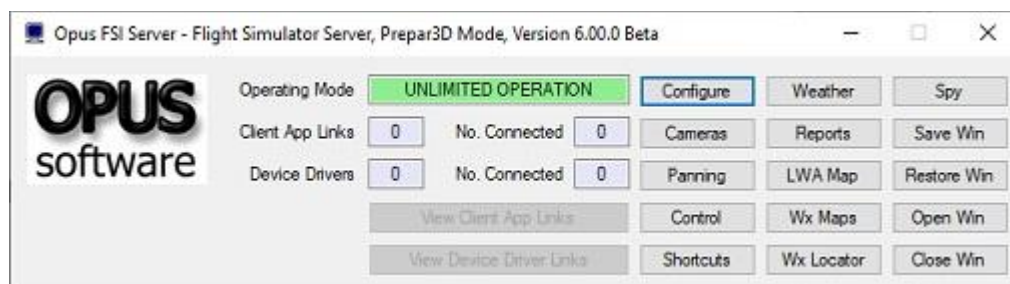


N.B. In order to see the full synchronized effects of Live View you must save a default flight with all engines running on each client system to ensure the aircraft is powered up and ready to fly.



Photo courtesy of the Human-Centered Design Institute, Florida Institute of Technology, using Opus with Prepar3D

On networked systems, you must install **OpusFSI** on each of your client computer systems (laptops or PCs), along with any scenery and airport addon packages you wish to use. If you wish to display external aircraft views on the client computers you will need to install the sim and all relevant aircraft addons. The **OpusFSI** software does not need to be licensed on the client systems, the purchased license is only required on your main 'flying' server system. Therefore, you may either copy or install the **OpusFSI** software on any number of client systems, the CLIENT program that you will run on the client computers does not check for any licensing information. It simply connects to and receives all necessary data from your main 'flying' server system.



OpusFSI P3D Server for Standalone or Networked Systems

Live Weather

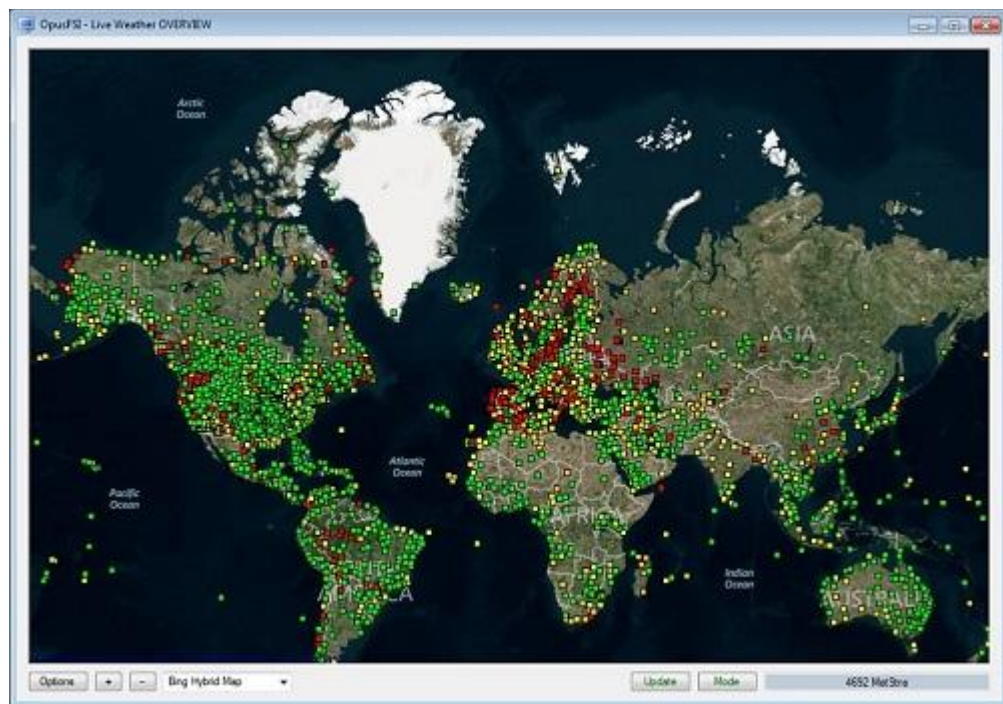
The **Live Weather Engine** requires internet access to obtain the latest live weather (METAR) reports for the area you are flying in. Data is downloaded from the NOAA or VATSIM servers. These live reports are used to construct Dynamic Weather and synchronize the weather on all networked **OpusFSI** systems.

*The **Live Weather Engine** does not include any sky and cloud textures. For optimum effect we strongly recommend you install the sky and cloud textures from packages such as Flight*

*Environment X and HDEv2 (freeware), and use the **OpusFSI Live Weather Engine** for the actual weather updates.*

Live Weather Features

- **Live Weather** constructs **Dynamic Live Weather** from current live (or historic) METAR data.
- Accurate detailed weather as far as the eye can see throughout your flight. No more unrealistic globalized weather from horizon to horizon, with OpusFSI you can see distant weather patterns all around you. See the changing weather patterns en route as you fly.
- **Live Weather** provides instant weather updates.
- No more METAR voids or unrealistic METAR data morphing.
- No more inconsistencies with distant ATC and ATIS reports. Accurate Destination Weather when over 200km away, with perfect weather reports at any distance to any point en-route.
- OpusFSI weather reports can be used instead of ATIS, and at non-ATIS airstrips.
- **Live Weather** allows you to see low lying mist and fog patches.
- **Live Weather** creates very realistic cloud, visibility layering and an overcast effect.
- **Live Weather** lets you turn on, off, or automatically generate the cirrus cloud effect.
- The **Live Weather Engine** supervises both the turbulence and ultra-realistic **Dynamic Head Movement** utilising actual real-life captured 3D accelerometer data.
- Load your own **custom** weather using a simple METAR import file.
- Load historic weather from within the previous 9 days (24 hours for WWTs and the Weather Locator).
- **Live Weather Overview and Locator** provides overview maps of weather conditions and a search facility so that you can locate weather matching your criteria.
- Save your own named **World Weather Themes** from the current weather to reload any time.
- **Relocate Weather** from any place in the world to your current location.
- **Dynamic Weather Reports** displayed during flight for your local area, destination, alternates, en route, lower and upper atmosphere weather.
- Standard and user configurable **Site Effects** for additional turbulence and wind shear effects within 80 km of the airfield resulting from local features such as terrain or obstacles on approaches.
- **Live Weather Assistant** provides zoomable geographic maps of Surface QNH, Surface Winds, Surface Visibility, Surface Temperature, Precipitation Levels, Low Cloud Cover, Cruise Level Winds, Cruise Level Temperature, Cruise Level Turbulence, Upper Level Wind and Turbulence, Met and Aerodrome Station Cover, flight plan route for the current 800 x 800 mile weather map and local traffic.
- **Flight Plan Assistant** imports activated flight plans and provides dynamic flight plan weather reports together with detailed reports on METARs, GRIB lower and upper atmosphere weather, flight plan waypoint weather and SIDs/STARs ordered according to direction and distance.
- **Client Side Weather Control** enables you to edit flight parameters and display weather data on a networked client PC.
- **Live Weather** allows perfect synchronisation of dynamic weather and cloud formations on networked systems.



Weather Overview and Locator

Opus FSI Server - Weather Options

Dynamic Live Weather

☒ Disable Weather Update on Startup

Flight Plan <departure> <route> <destination> ...
EHAM VOLLA GORLO KOPUL TANET DET LARK TI

Flight Plan Options

Destination **EGKK** ICAO
 Max Cruise Altitude **36000** Feet

1st and 2nd Alternates
 3rd and 4th Alternates

Update Sites when Distant ☒
 Export World Weather ☐
 Historic Weather ☐

Weather Relocation

☐ Relocate Weather

From
 To

Weather Download Options
 Smoothing and Stabilisation
 General User Preferences

METAR Import

☐ Import METAR Data From File

METAR Import File Specification ...

Browse

Scan Import File Every Seconds

☐ Global METAR Conditions

World Weather Themes

☐ Enable World Weather Theme

World Weather Theme Filename ...

Browse for World Weather Theme

Save Current Weather as World Theme

Full Weather Reload
 Update Weather
 Refresh Weather

Defaults

? Recommended Practices

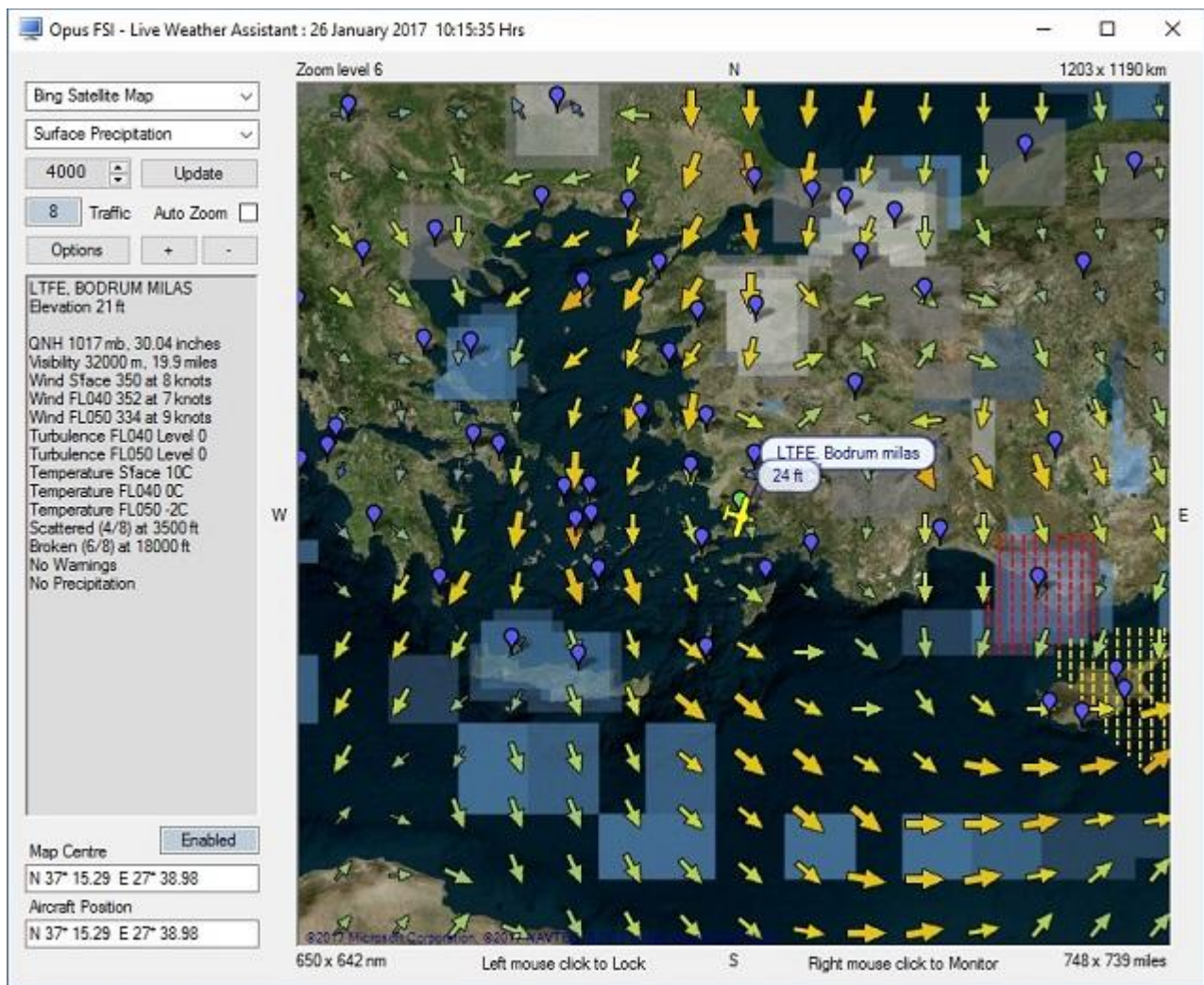
Weather dialog



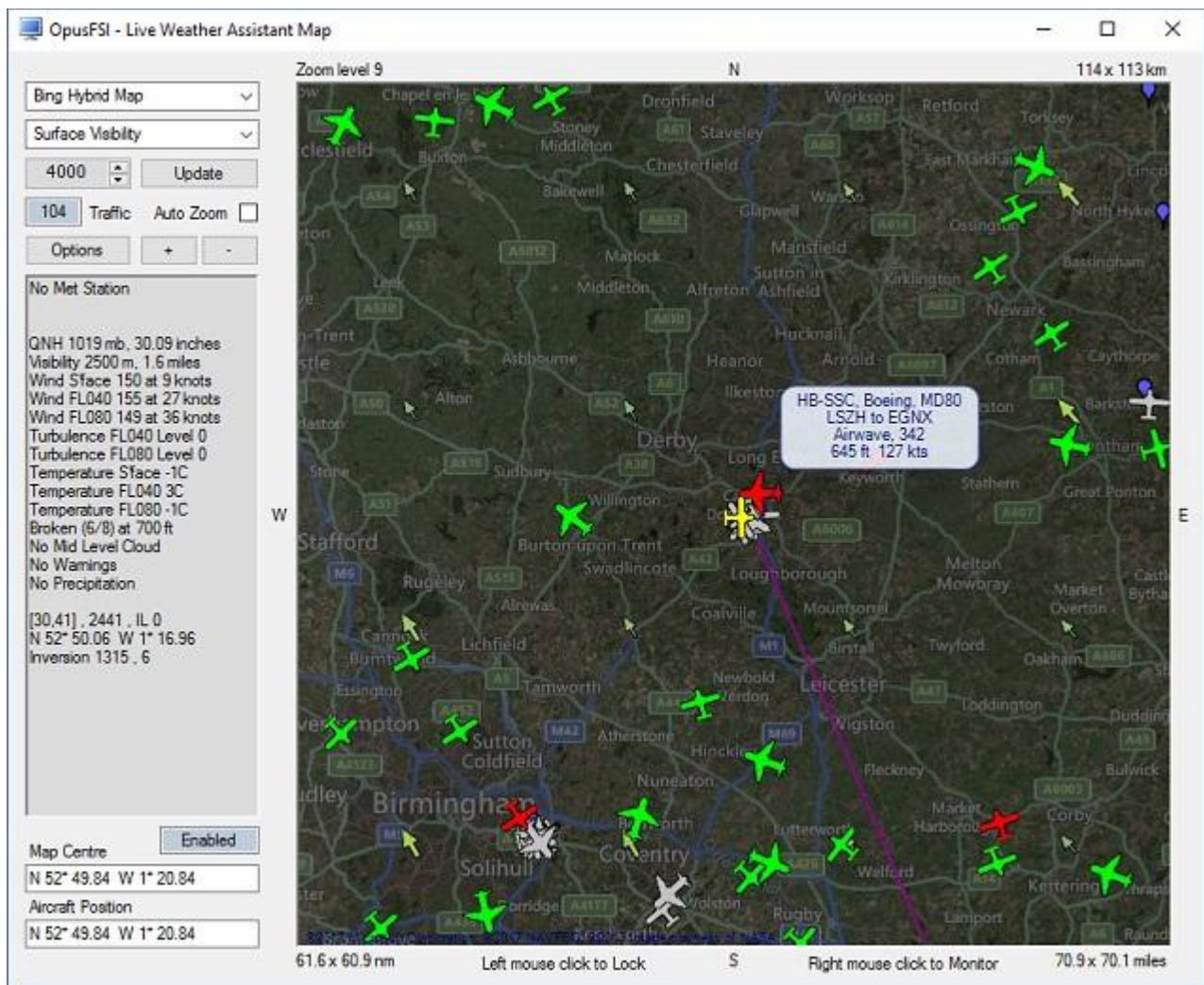
Weather Report Menu



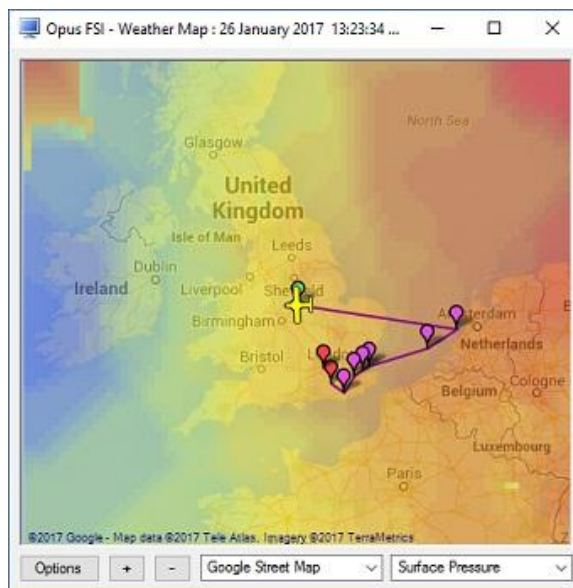
Local Weather Report

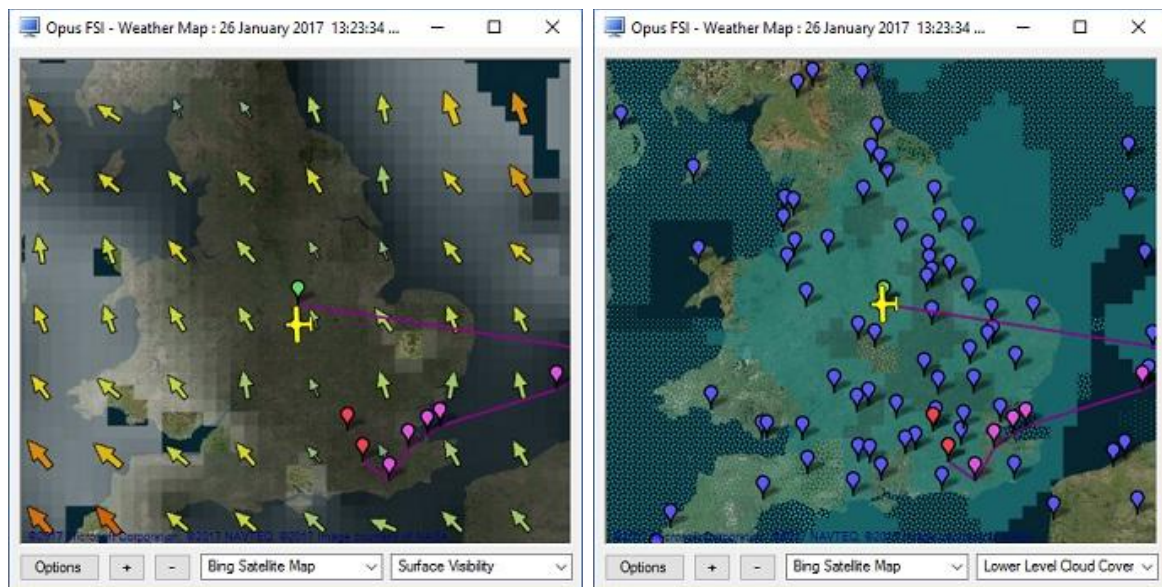


Live Weather Assistant large map showing precipitation



Live Weather Assistant large map showing visibility and local traffic





Selection of Live Weather small footprint maps

Downloaded METARs

GRIB Data Report

Flight Plan Report

SIDs and STARs

Close Report

Options

+

-

Bing Satellite Map

Surface Visibility

Options

+

-

Bing Satellite Map

Lower Level Cloud Cover

Local Area

Lower Atmosphere

Upper Atmosphere

En Route

Close Window

Destination

Alternate 1

Alternate 2

Alternate 3

Alternate 4

Minimise

Flight Plan <departure> <route> <destination> ...

ERAM VOLLA GORLO KOPUL TANET DET LARK TIMBA EGKK

Destination

EGKK

ICAO

Max Cruise Altitude

36000

Feet

1st and 2nd Alternates

EGLL

3rd and 4th Alternates

The Weather buttons must be pressed to register any changes

Flight Plan Options

Refresh Weather

Update Weather

Reload Weather

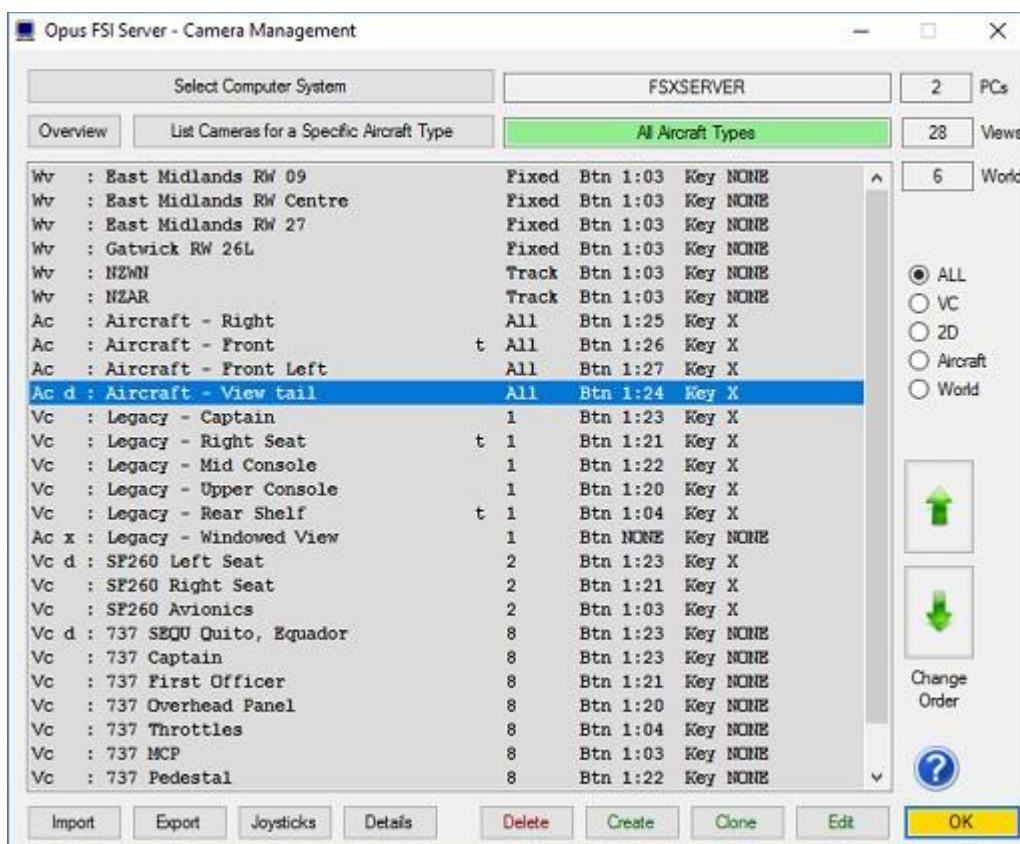
Client Side Live Weather Engine Control

Live Camera

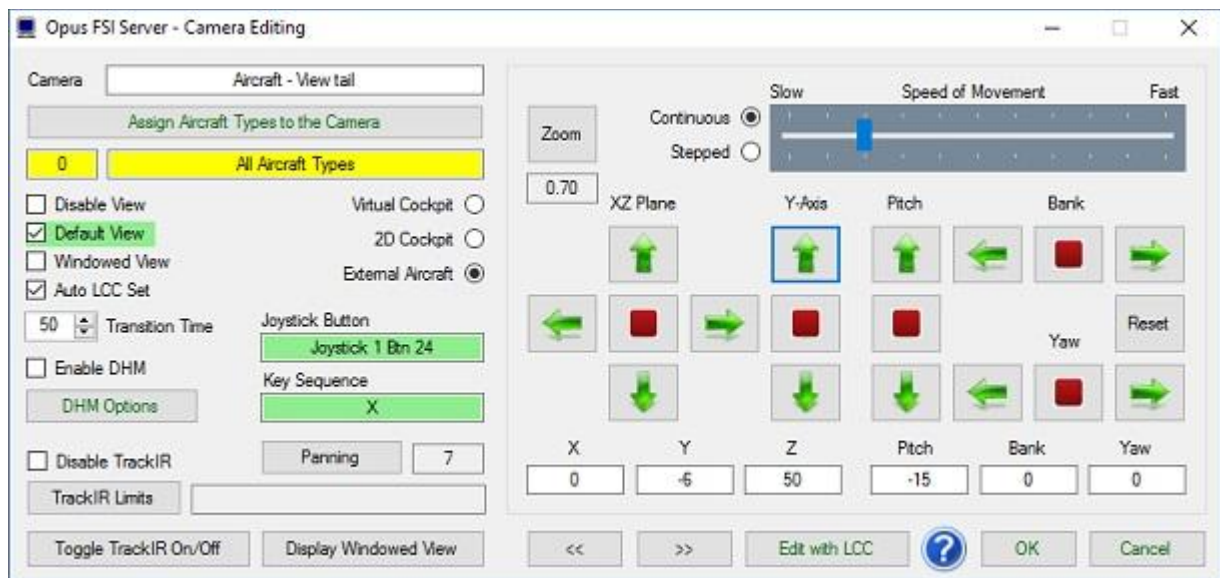
Live Camera is a standard feature within the **OpusFSI** Flight Simulator Interface for the Microsoft's Flight Simulator X and Lockheed Martin Prepar3D simulators. **Live Camera** provides you with a user-friendly interface for creating, controlling and managing Virtual Cockpit, 2D Cockpit, External Aircraft, Runway, Spot, Locked Spot, FlyBy, Top-Down, Nearest Tower, Observer and World Views for your flight simulator system. **Live Camera** allows you to create multiple **Windowed Views** on your server and client systems. Camera views can greatly enhance your flight simulator experience on both standalone and networked systems by providing easy view control with the press of a joystick button or the use of an assigned keyboard key sequence. On networked systems **Live Camera** provides you with the means to create a multitude of display options including wide sweeping panoramic views of the outside world.

All camera views are created, controlled and managed from the main 'flying' server system, with live view adjustment for each of the client system camera views. Joystick buttons and keyboard sequences can be assigned to individual views or multiple camera views spanning the networked system. Duplicated button or key assignments permit simple and fast coordinated changes to your multi-screened display with a single button press or key stroke.

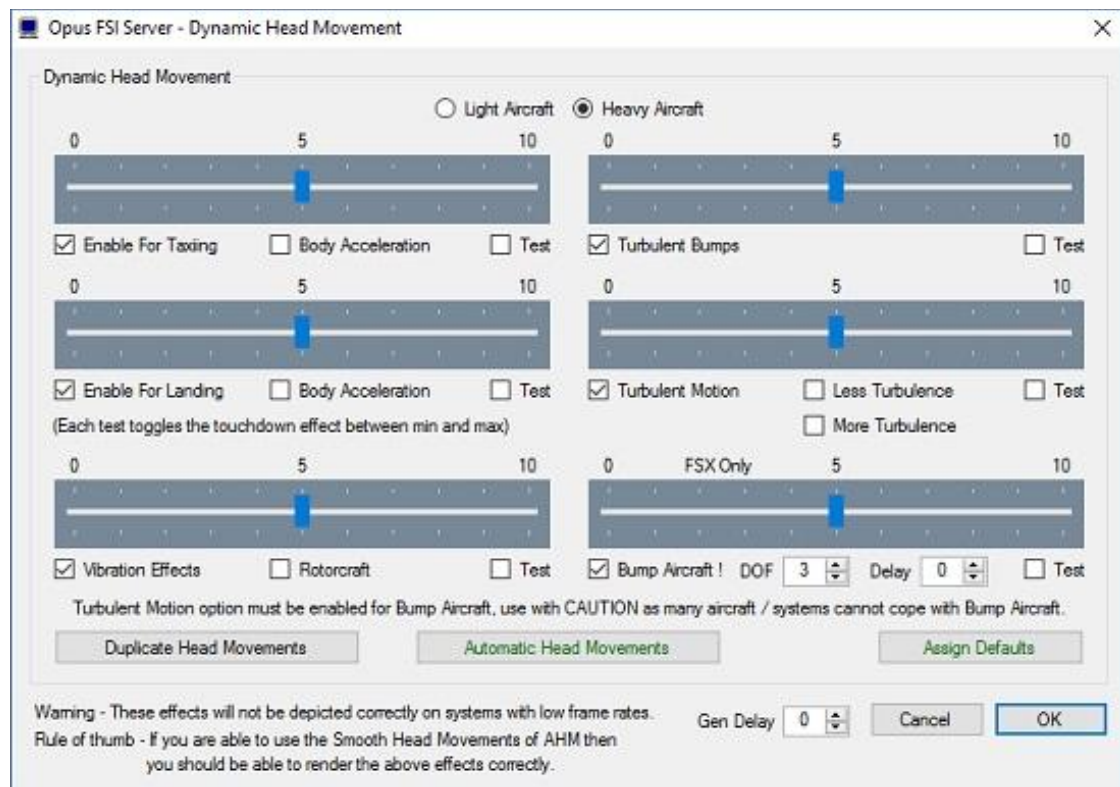
Panning Sequences such as aircraft 'walk arounds' or 'fly arounds' may be imported or created. A set of pre-configured examples are provided for you to use. You may assign aircraft types to a sequence so that the sequence will only be played if the relevant aircraft is loaded. The LCC can be used to define each eyepoint and options are provided to copy, flip and mirror sections of the sequence which makes the creation of panning sequences quick and easy.



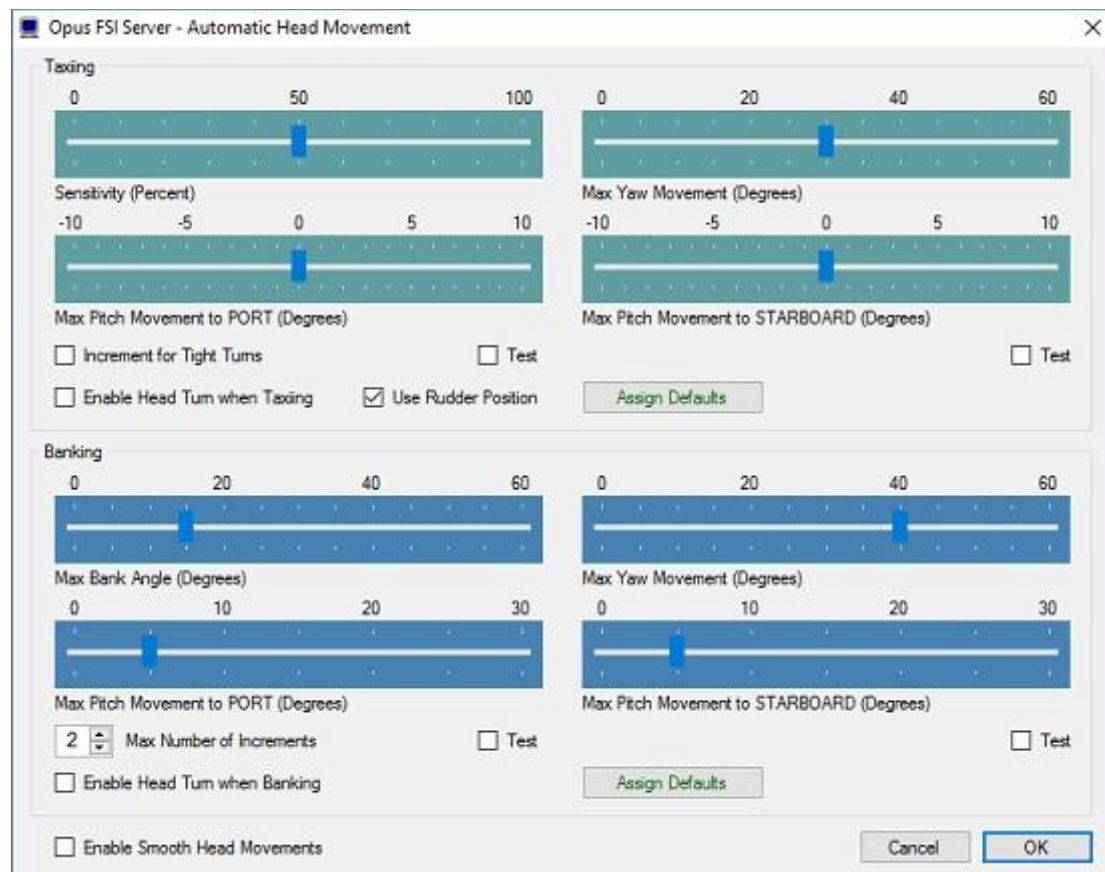
Live Camera Management



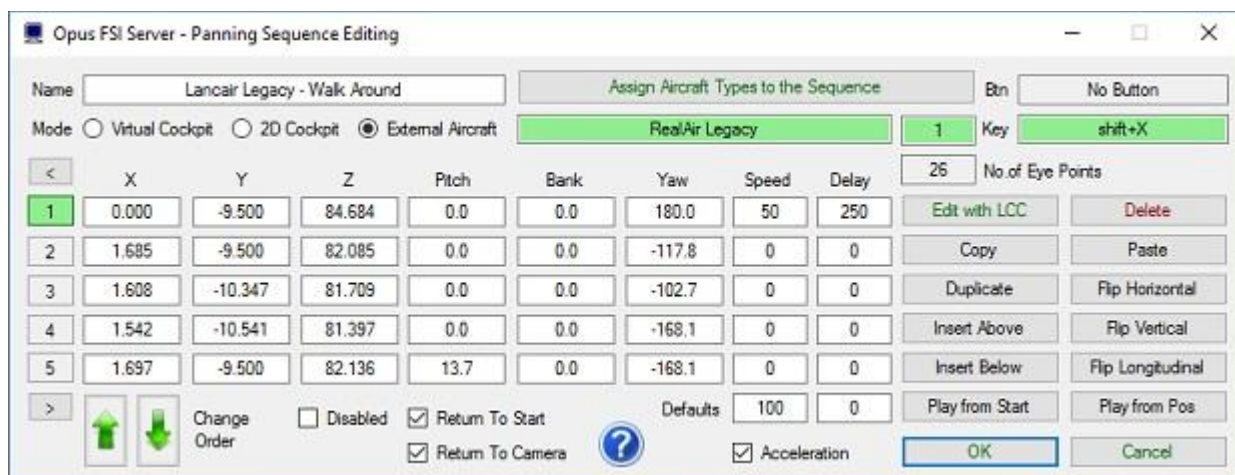
Live Camera Editing



Dynamic Head Movement Options



Automatic Head Movement Options



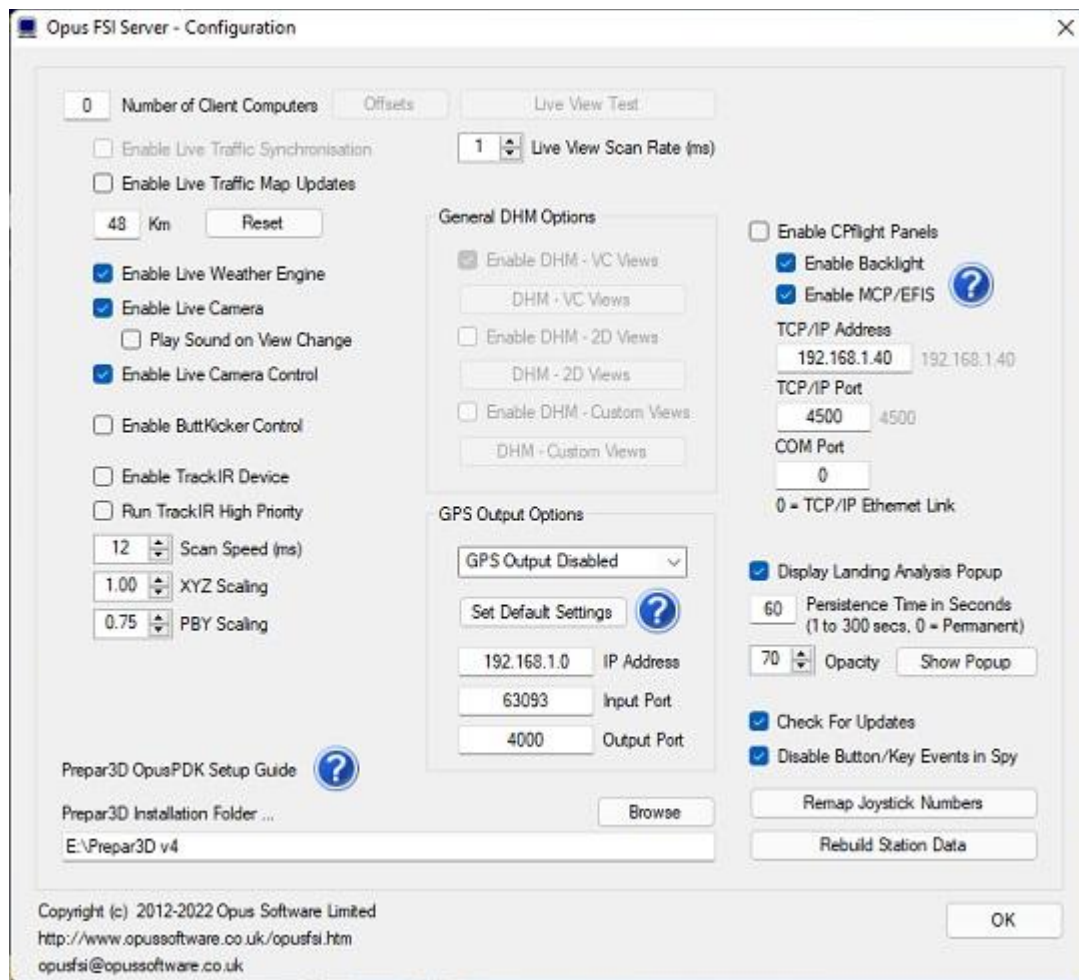
Panning Sequence Editing

- **Live Camera** provides a user-friendly interface for creating, controlling and managing Virtual Cockpit, 2D Cockpit, External Aircraft, Runway, Spot, Locked Spot, FlyBy, Top-Down, Nearest Tower, Observer and World Views.
- **Live Camera** creates, controls and manages all views from the 'flying' server system, with live view adjustment for each of your client system cameras.
- **Live Camera** allows joystick buttons and keyboard key sequences to be assigned to individual or multiple views.
- **Live Camera** does not require you to make any changes to the control assignments.

- **Live Camera** enables default views to be specified facilitating the use of multiple screens or the creation of panoramic views over networked systems.
- **Live Camera** includes support for both standard non-windowed and windowed views. Windowed views provide greater flexibility and support to cockpit builders and all systems equipped with multi-screened computers.
- **Live Camera** stores separate sizes and positions for all docked and undocked Windowed views, allowing the user to save different preferred window position and sizes.
- **Live Camera** provides both coarse and fine zoom control for all camera view types.
- **Live Camera** provides ultra-realistic **Dynamic Head Movement**, or virtual cockpit camera shake, based on actual real-life captured **3D accelerometer data**.
- **Live Camera** supports **Automated Head Movement** to assist the pilot whilst taxiing and banking in a turn (disabled when using TrackIR).
- Camera **Import** and **Export** options are included. User Camera Definition Files (CDFs) are available on our Downloads page for import.
- Import, create or export **Camera Panning** sequences such as aircraft walk arounds which can be assigned to a shortcut button/key or camera views.
- **Live Camera Control** for adjusting the eyepoint in VC, 2D, or Custom views using a GamePad, arrow keys within the LCC dialog, or key/button Shortcut controls.

Live View

With **Live View**, Opus Software have used their 37 year experience of developing high-performance real-time networked telemetry and data acquisition systems, to provide the networking software you need to create your multi-screened experience for your flight simulator. No matter what complexity of system you intend to create, **Live View** will provide the optimum and smoothest solution.



OpusFSI P3D Server Configuration

The configuration of the **Live View** system is simple to the extreme, just tell the main 'flying' server how many **Live View** clients you wish to support, and configure the server's computer name or IP address into each of the client systems, and away you go. You can sit back and watch your client systems connect and start communicating with the server.

Spy buttons help you monitor the activity over all the networked links, or monitor the overall activity and operation of the **SERVER** and **CLIENT** programs.

- **Live View** synchronizes the aircraft's current position, attitude, landing gear, wheel movement, lighting, ailerons, elevator, rudder, flaps, spoilers (speed brakes), engine throttles and reversers.
- **Live View** synchronizes the simulator's date and time, with either weather themes or full METAR weather updates for the aircraft's surrounding area.
- **Live View** employs and optimizes multiple dedicated ultra high-performance network IPC communication links to provide the highest level of performance and the smoothest possible operation.
- **Live View** requires minimal set up and configuration to get up and running.



Live View Multi-Screen Networked Displays with CPFlight MCP and EFIS Panels

With **Live View** you can easily create that multi-screened display experience for your P3D system or manage your multi-screened cockpit. The system can be as simple or complex as you desire. The multiple screens can be used to display any variety of cockpit 'out of the window' or external views, including the creation of panoramic displays. The set up and configuration of your system is further simplified using the in-built **Live Camera** interface.

Device Drivers

The **OpusFSI** software also includes device drivers for the **CPFlight MCP737/EFIS737 PRO/EL** panels interfacing to the standard sim aircraft and the **PMDG 737NGX** aircraft simulator.



Drivers Included for CPFlight MCP737 and EFIS737 Panels

OpusFSI uses both Microsoft's SimConnect and FSUIPC to interface with the sim. FSUIPC is a free to download from <http://www.schiratti.com/dowson.html>

Beta Software

Existing OpusFSI customers can download the OpusFSI Beta software from our website. Please read the [OpusFSI v6 Getting Started Single PC.pdf](#) document for details of how to set up your system and network.

System Requirements

- Lockheed Martin Prepar3D simulator.
- Windows 11/10/8/7 operating system.
- Microsoft .NET Framework Version 4.7.2.
- FSUIPC (free version).
- 90 MB hard disk space.